

VLEEM 2

Mid-term Assessment Meeting
ECN, Amsterdam, 25-26 September 2003

WP1 – Progress review

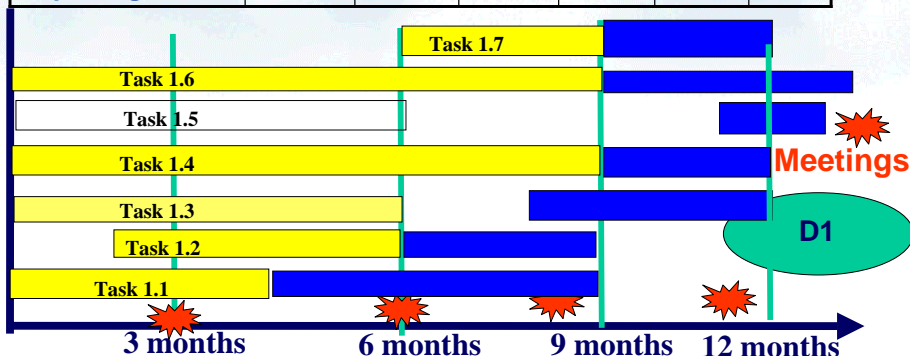
<http://www.VLEEM.org>

VLEEM2 – Work package 1 - Enerdata

- WP1.1 : enhancement of the sustainability criteria for energy RTD strategies and elaboration of a memorandum on sustainability
- WP1.2 : enhancement of the assessment of the very long term economic growth in relation to demographic transitions and technical progress in the world
- WP1.3 assessment of the economic and energy exchanges and trade among regions
- WP1.4 : enhancement of the assessment of the very long term transport systems and related needs for energy services, both from the households and production sides
- WP1.5 : assessment of the production systems related to water delivery, self accomplishment and transport infrastructures and equipment
- WP1.6 : socio-economic data collection related to life-styles and behaviours in selected developing countries
- WP1.7 : integration of all above parts in the overall VLEEM framework

VLEEM2 – Work package 1 - Enerdata

Men-months	NRD	IPP	ECN	STE	VBP	UU
Research, data collection	9.5					
Meeting, brainstorming	1.0	0.5	0.5	0.5	0.5	0.5
Reporting	2.0					



VLEEM-2 WP1 Task 1 Sustainability

The seminar on « human development and sustainability of energy systems » was hold on the 30th April

A synthesis « Accounting for sustainability in VLEEM » was drafted and circulated in August 2003

Next steps

- Further discussion in the mid-term seminar
- incorporation of modifications in the synthesis
- Nex draft and circulation: mid October
- Final version End October
- Chapter in mid-term assessment report: end October

VLEEM-2 WP1 Task 2 Economics

Review of theoretical approaches relevant for very long term assessment of economic development in VLEEM

Development of a macroeconomic general equilibrium module within VLEEM-BASES:

- Equilibrium consumption/investment/transfers according to the age structure of the population
- Equilibrium salaries/transfers/savings according to the age structure of the population

Next steps

- Calibration and validation of the module for all world regions: mid October
- Linkage between investment and savings in the one side, unemployment in the other side: end October
- Chapter in mid-term assessment report: end October

VLEEM-2 WP1 Task 3 World exchanges

Worldwide location of energy intensive industries and international trade of related products: UU, on-going

Worldwide competition for goods and services and related trade:

- Accounting through ratio actual volume /potential volume of labor, in relation to assumptions on protectionism and balance of payments
- No modelling of imports/exports

Next steps

- Calibration and validation of worldwide competition for all world regions: mid October
- integration of the international trade of energy intensive products, calibration and validation: end October (UU OK ?)

VLEEM-2 WP1 Task 4 Transport

Theoretical and modelling development of the future transport systems: close to completion

- Time for mobility generated by self-accomplishment services outside the home in addition to « zahavi's time »
- Global cost function including the value of time (Becker's equation) to be integrated in VLEEM-BASES; generalisation to all functions ?

Next steps

- Integration in VLEEM demand sub-model: mid-October
- Calibration and validation: end October
- Chapter in mid-term assessment report: end October

VLEEM-2 WP1 Task 6 Data

Collecting data for the demand model in major developing countries

- Collection of current statistics relevant to VLEEM demand model from international and national sources currently accessible; incorporation in the model data files (Excel): completed
- Preparation of a simplified questionnaire for collecting additional necessary data from main developing countries representative of VLEEM regions: completed

Next steps

- Identification of counterparts in selected LDC's, jointly with the VLEEM consortium: on going
- Additional data collection from counterparts: scepticism !!
- Chapter on « Data situation and expectations for VLEEM demand sub-model » in mid-term assessment report: end October

VLEEM-2 WP1 Task 7 Integration

Socio-economic modelling

- Macro-economics: completed all regions
- Gender separation in population: completed one test region

Next steps

- Transport in relation to self-accomplishment: on going, mid-October
- Water delivery and other production: later on ...

