

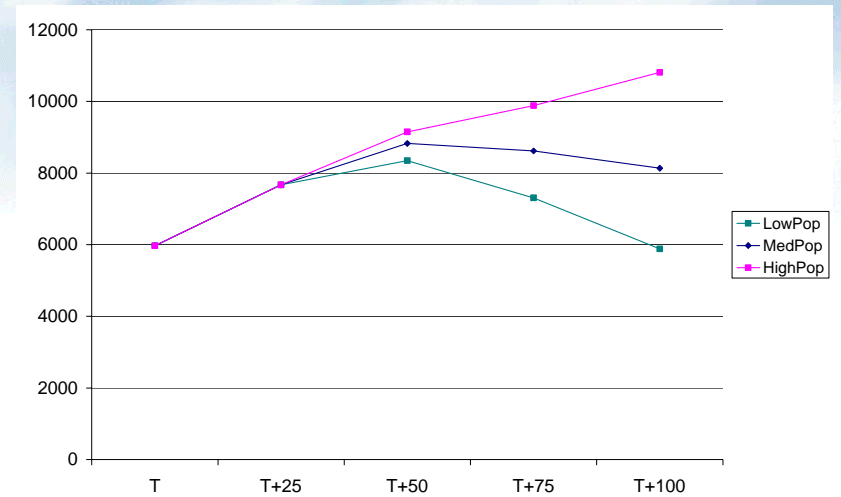
VLEEM 2

Mid-term Assessment Meeting
ECN, Amsterdam, 25-26 September 2003

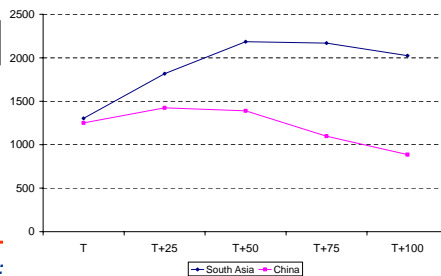
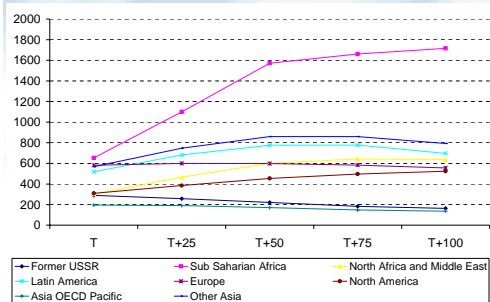
socio-economic scenarios: variants

<http://www.VLEEM.org>

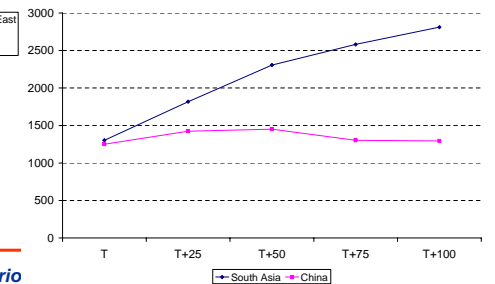
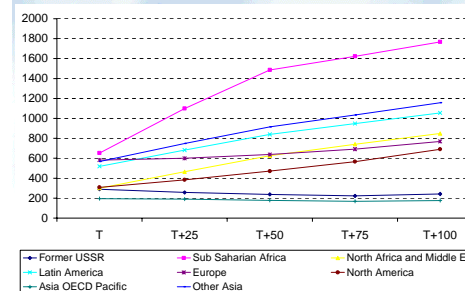
World demography forecasts by scenario



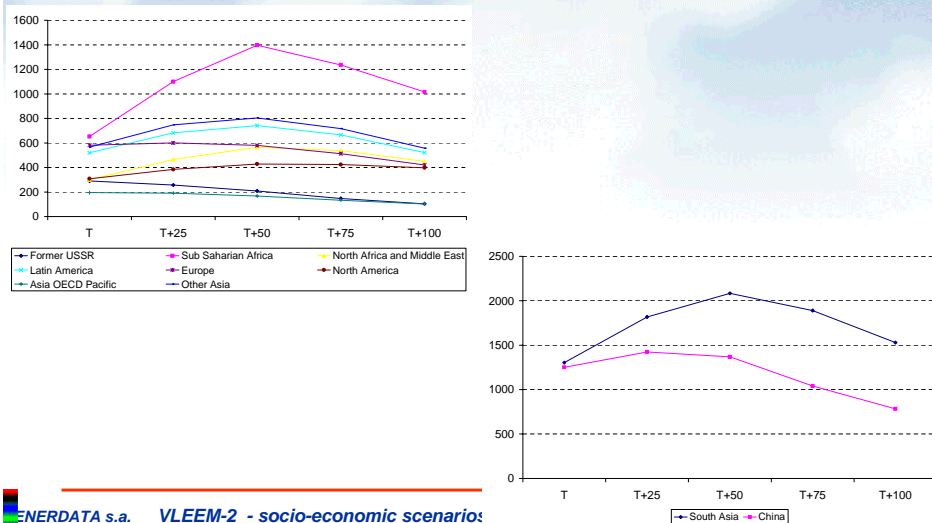
Demography forecasts by region: MidPop Scenario



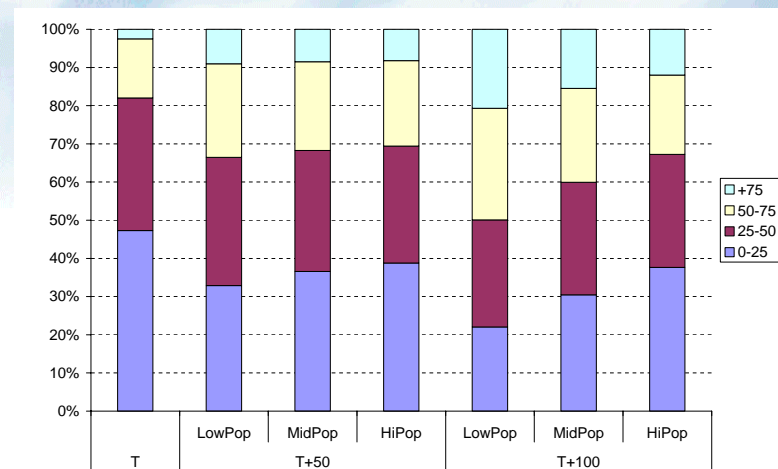
Demography forecasts by region: HiPop Scenario



Demography forecasts by region: LowPop scenario



Population by class of age



Impact of population aging on macro-economic equilibria: example of France -1

	T	T+25	T+50	T+75	T+100
capita cons. Index 0-24	81	83	84	84	84
capita cons. Index 25-49	100	100	100	100	100
capita cons. Index 50-retirement	130	130	130	130	130
capita cons. Index >retirement	80	90	100	110	120
salary index 0-24	50	50	50	50	50
salary index 25-49	100	100	100	100	100
salary index 50-75	150	130	120	120	120
Consumption index	78	80	81	82	84
Investment index	20	18	17	16	14
Industrial investment index	12	10	8	7	5
Administration cons.&inv index	13	13	13	13	13
Households cons.&inv Index	73	75	76	78	80
Reference capita cons index	94	97	99	100	103
Reference capita transfert	28	29	33	35	38
salary index reference	104	107	104	104	103
Overall savings hh, base GDP	1,1	-0,4	1,1	1,5	1,4

Impact of population aging on macro-economic equilibria: example of France -2

	T	T+25	T+50	T+75	T+100
capita cons. Index 0-24	81	83	84	84	84
capita cons. Index 25-49	100	100	100	100	100
capita cons. Index 50-retirement	130	130	130	130	130
capita cons. Index >75	80	90	100	110	120
salary index 0-24	50	50	50	50	50
salary index 25-49	100	100	100	100	100
salary index 50-75	150	150	150	150	150
GDP index	100	100	100	100	100
Consumption index	78	80	81	82	84
Investment index	20	18	17	16	14
Industrial investment index	12	10	8	7	5
Reference capita cons index	94	97	99	100	103
Reference capita transfert	28	25	27	29	33
salary index reference	104	113	114	113	111
Overall savings hh, base GDP	1,1	-3,3	-3,3	-3,4	-2,6
Overall surplus, base GDP T	1,2	-1,2	0,2	1,3	4,1